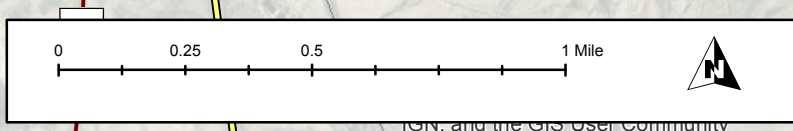
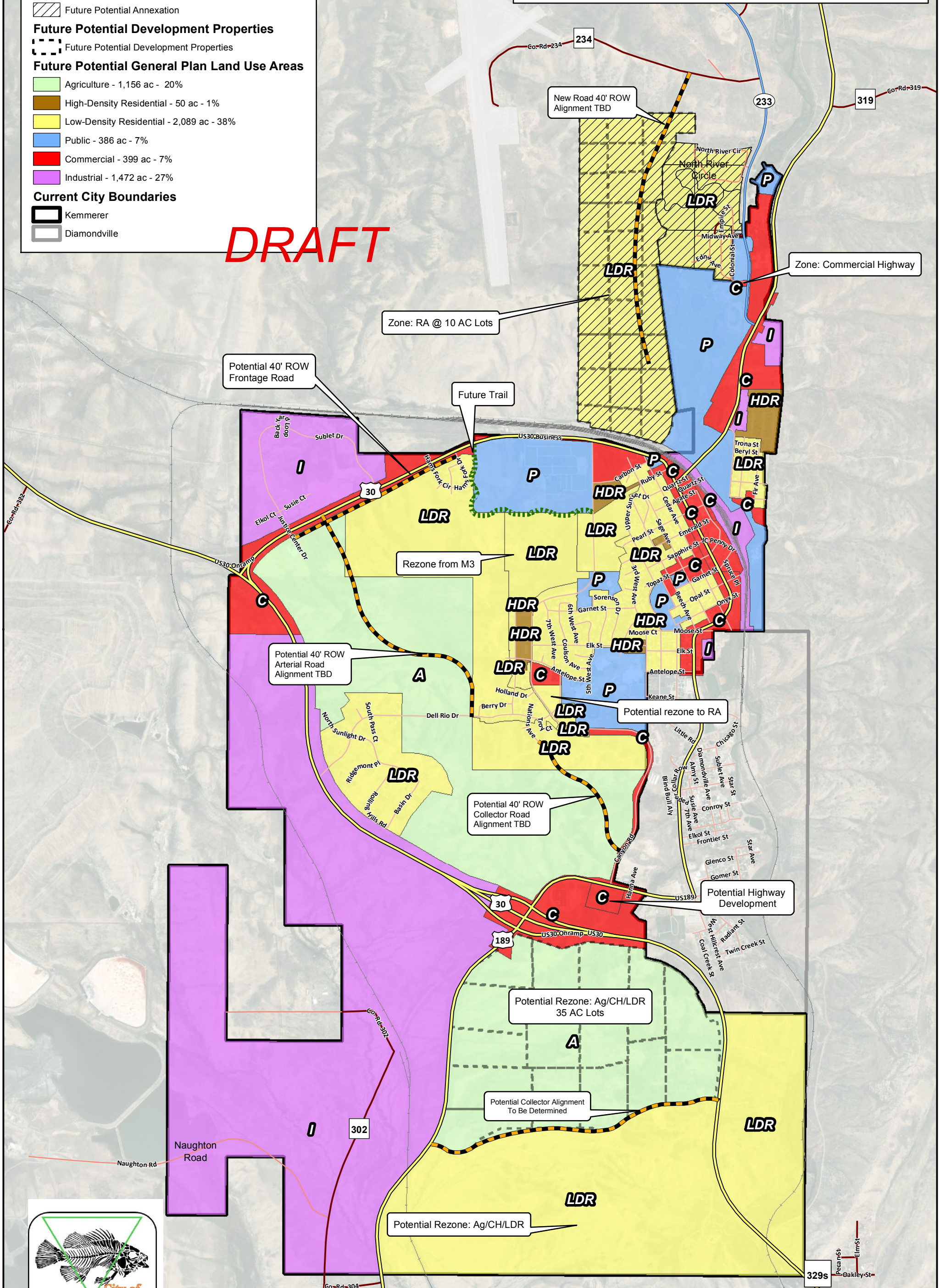


# City of Kemmerer

## Future Land Use & Transportation Map

- Future Potential Roads and Trails**
- Potential Road
  - Potential Trail
- Future Potential Annexation**
- Future Potential Annexation
- Future Potential Development Properties**
- Future Potential Development Properties
- Future Potential General Plan Land Use Areas**
- Agriculture - 1,156 ac - 20%
  - High-Density Residential - 50 ac - 1%
  - Low-Density Residential - 2,089 ac - 38%
  - Public - 386 ac - 7%
  - Commercial - 399 ac - 7%
  - Industrial - 1,472 ac - 27%
- Current City Boundaries**
- Kemmerer
  - Diamondville

**DRAFT**



Information displayed on this map was created using the most accurate information available. It is for informational and planning purposes only and should not be construed to be an official survey, nor a resolution for any boundary dispute, of any data presented. Revised 2/22/18

star Geographi

IGN, and the GIS User Community